

**Table 1: Standard Holes Sizes for CHS/Pipe**



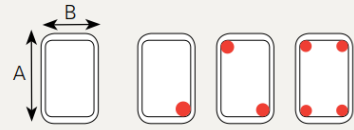
NB	Outside Diameter ø (mm)	1 Hole ø (mm)	2 Holes ø (mm)	4 Holes ø (mm)
20	26.9	10	10	10
25	33.7	10	10	10
32	42.4	11	10	10
40	48.3	12	10	10
50	60.3	15	11	10
65	76.1	19	13	10
80	88.9	22	16	11
90	101.6	25	18	13
100	114.4	30	20	14
125	139.7	35	25	17
150	165.1	45	30	22
	168.3	45	30	22
	219.1	55	40	30
	273.1	70	50	35
	323.9	85	60	40
	355.6	90	65	45
	406.4	105	75	55
	457	115	85	60
	508	130	90	65

**Table 2: Standard Holes Sizes for SHS**



A x B (mm)	1 Hole ø (mm)	2 Holes ø (mm)	4 Holes ø (mm)
20 x 20	10	10	10
25 x 25	10	10	10
30 x 30	11	10	10
35 x 35	12	10	10
40 x 40	14	10	10
50 x 50	18	13	10
65 x 65	25	16	11
75 x 75	25	19	13
89 x 89	35	22	16
90 x 90	35	25	16
100 x 100	35	25	18
125 x 125	45	35	22
150 x 150	55	40	30
200 x 200	75	50	35
250 x 250	90	65	45
300 x 300	110	75	55
350 x 350	125	90	65
400 x 400	145	100	75

**Table 3: Standard Holes Sizes for RHS**



A x B (mm)	1 Hole ø (mm)	2 Holes ø (mm)	4 Holes ø (mm)
50 x 25	14	10	10
65 x 35	18	13	10
75 x 25	20	14	10
75 x 50	25	16	11
100 x 50	30	20	14
125 x 75	40	30	18
150 x 50	40	30	20
150 x 100	45	35	25
200 x 100	60	40	30
250 x 150	75	55	40
300 x 200	90	65	45
350 x 250	110	80	55
400 x 200	115	80	60
400 x 300	125	90	65

Note: '1 hole', '2 holes' and '4 holes' means the number of holes in each otherwise unopen end.